



# WORKING WITH COMMUNITIES

16 NOVEMBER 2022

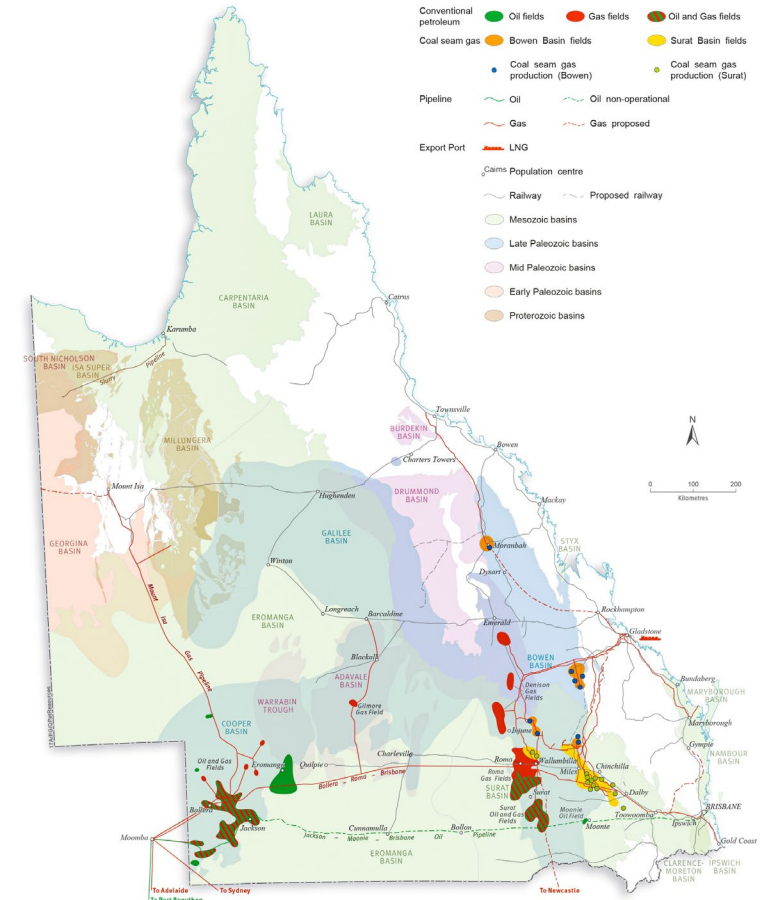
*Warwick Squire – CEO, GasFields Commission Queensland*

# WHO ARE WE?

Purpose to manage and improve the sustainable coexistence of landholders, regional communities and gas industry in Qld

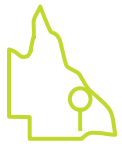
We do this by:

- **FACILITATE** effective stakeholder relationships, collaborations and partnerships
- **REVIEW** and oversight the effectiveness of implementation of policy and regulatory frameworks
- **ADVISE** all key stakeholders on matters relating to sustainable coexistence, leading practice and management of the onshore gas industry



# HISTORY

The gas sector is a significant contributor to the Queensland economy



**1900**

Gas is first discovered by chance in Roma from a well being drilled for water



**1968**

Gas is piped to Brisbane via the Wallumbilla to Brisbane gas pipeline



**1996**

Commercial production of coal seam gas (CSG) commences in the Bowen Basin



**2015**

Liquefied natural gas (LNG) is exported from Gladstone



**2022**

Oil and gas supports 6,000+ jobs and is expected to generate \$1B royalties in FY22

# CURRENT STATE OF PLAY

- Every Queenslanders benefits from the resources sector
- Royalties fund schools, hospitals, infrastructure projects and other vital services
- Jobs and economic development opportunities – local infrastructure investment and economic growth
- Partnership with landholders - \$702 mill in compensation to landholders
- Renewables ‘new’ player in the energy landscape – similar issues and opportunities



# IMPORTANCE OF COMMUNITY

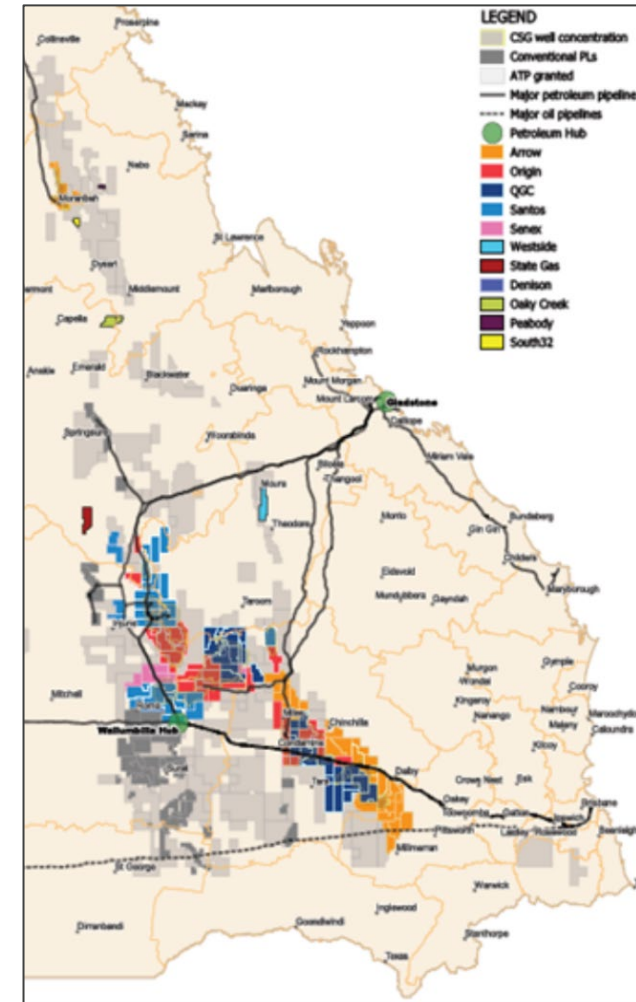
- Communities are pivotal to the success of realising energy development – they must be part of the **conversation**
- Infrastructure is generally hosted by a traditional agricultural **community**
- In many cases on **private land or a farm**, and these farms are often someone's **home**
- Notion of **coexistence** premised on mutually beneficial outcomes for community, landholders and the industry

*“The number one priority for all resource proponents must be to earn the trust of the communities in which they propose to operate. Without a social licence to operate, resource developers will see the sum of all their fears in expensive project rejections from state and federal governments.”*

Michael Roche, Chief Executive, Queensland Resources Council, 25 March 2011

# CSG EXPERIENCE – SURAT BASIN

- Context
  - Mandate from government for CSG-LNG industry development
  - New industry, new area – no experience with resource sector
  - Geography - closely settled, high value agricultural land
  - Lack of information and science about industry – fear of the unknown
  - Lagging regulatory framework and lack of strategic planning
  - Poor industry and government engagement and land access practices
- Much investment by government, industry and host communities in coexistence over 15 year period
- Industry has matured – CSG industry in Qld a success story from a social license and coexistence perspective
- BUT... it hasn't been easy



# KEY LESSONS LEARNT

- 1 Pursue effective communications and engagement
- 2 Land access is a business to business relationship
- 3 Robust, trustworthy and clear regulatory framework
- 4 Early and coordinated planning is key
- 5 Trust facts not emotion – science critical
- 6 Leverage legacy opportunities





# SUMMARY

- Energy sector critical – hydrogen and renewables is next wave of development in regions
- Community need to be part of the conversation – not an afterthought
- Planning, engagement, communication and respect at the heart of successful coexistence outcomes
- Much to be learned and leveraged from our experience – important that we don't make the same mistakes again





# QUESTIONS





[www.gfcq.org.au](http://www.gfcq.org.au)

